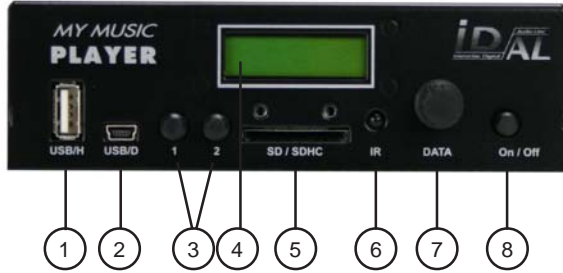


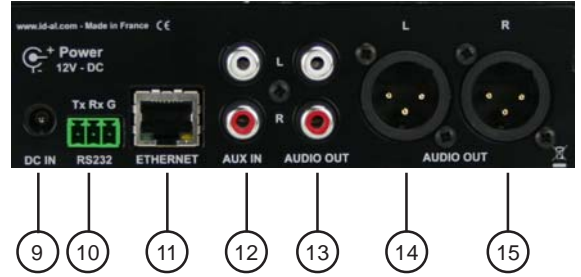


My Music Player - Quick start guide

1 - Connections



- 1 - USB Host connexion. Connect USB flash memory, USB hard disk
- 2 - USB Device link to connect a computer
- 3 - Button 1 and 2
- 4 - LCD display
- 5 - SD card memory slot
- 6 - Infrared sensor
- 7 - «DATA» encoder
- 8 - Power on/off



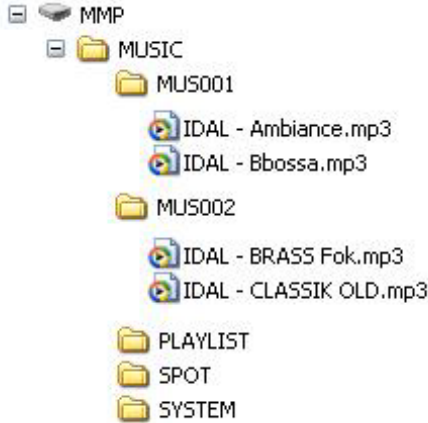
- 9 - Power supply input
- 10 - RS232 link
- 11 - Ethernet link
- 12 - Aux audio input
- 13 - Unbalanced audio output
- 14/15 - Balanced audio output

2 - SD and USB stick memory

Choose a quality flash memory card of minimum size 256MB up to 64GB - Formatted in FAT32 only
Compatible with major USB Key or SD / SDHC card

3 - Operation of the My Music Player

You need to create some folders to use the My Music Player. At minimum, you need to place one folder at root with the name «MUSIC». Inside this folder, place one sub-folder «MUS001». and your audio file inside.



When you have created the folders and copied the files, insert the media in the player and switch on.

4 - First use

When you switch on for the first time, My Music Player ask you to select the main media. Main Media is the main storage disk (USB stick, SD card, HDD) where you have placed the audio files.

+MAIN MEDIA

NO MEDIA

- ↓
- USB-EXT Select external USB connector
- ↓
- USB-INT Select the internal USB
- ↓
- SD CARD Select SD card in the front face

Click on DATA button to select the function
Turn the button to make your choice
Click the button to validate

5 - Play a folder

My Music Player need 30 seconds to start. After boot, you can see a welcome message with the name, serial number and firmware version.

MY MUSIC PLAYER
SN:08BX V1610

Press Data button and turn

**USER -> SOURCE -> SELECT SOURCE -> MUS/
PLS/SPT -> MUS -> 001 -> RND**

Turn and select «1» and press the data button. You should listen the files in the folder MUS001.

6 - Use Ethernet

Connect My Music Player using Ethernet to setup date/time and some other parameters.

If you don't know the IP address of the player (DHCP mode as default), you can use the name of the player.

In your browser, type the name : <http://mmp-xxxx>

xxxx = the serial number of your player you can see on the LCD when switch on in stop mode.



My Music Player - Quick start guide

Scheduler

The My Music Player can be programmed to create broadcast schedules ; to do so, use the ID-AL scheduler software. Software and user manuals are available, in free download, from the ID-AL web site www.id-al.com. The file created with the Scheduler software (scheduler.tm3) must be copied at root of the folder «SYSTEM»

If you use the scheduler function, you need to set up date and time in the admin page by ethernet link.

MENU

When you click on the Data button, you obtain the menu. Turn to change, click to validate.

USER

SOURCE	Select the source to play
ADMIN	
MAIN MEDIA	Select the main media
VOLUMES/GAINS	Change volumes
DATE/TIME	Setup date and time
ETHERNET	Ethernet configuration
AUTOPLAY	Autoplay mode
UPDATE FTP NOW	Update from preset FTP server
USB DEVICE MODE	Select USB Mode to update the media
FADE IN/OUT	Setup Fade in/out

Firmware update

The firmware could change sometimes to offer new features. You can download the new version for free from our web site www.id-al.com (support section)

You can also find some bugs in the first version of this firmware.

MyMusicPlayer v.1610 is still a beta version.

This condition induces that some bugs can come out. To correct bugs from version prior to the current version 1610, please do the following:

- 1 - Download the firmware from id-al.com web site.
- 2 - Copy the file at root of a USB flash memory. No other file on the key.
- 3 - Insert the USB key and switch on
- 4 - Wait around 5 minutes. Nothing is displayed on the LCD. BE PATIENT!

Don't switch off during firmware update.

When the update is finished, player ask you to select the «main media».

All parameters are set to default value.

Remove the USB key. Your player is now operational.

Configuration with Ethernet

Connect the player to the network and browse the html page using the IP address. The default factory address is : 192.168.1.250



For user page only :

Login : user
Password : user

For administrator and user pages :

Login : admin
Password : admin

Connect with FTP :

Login : ftp
Password : ftp
Port : 21

Miscellaneous

You can download more informations from the www.id-al.com web site (support section)

- Complete manual, Scheduler software, test files, current firmware
- New firmware can be downloaded from the web site for free. We offer more features and correction of the bugs.
- Don't hesitate to send your comments and the bugs you can find. We will do our best to update quickly.