

MultiPlayer



Audio vidéo player

MANUAL

TABLE OF CONTENTS

| | |
|--|---------|
| A - Safety instructions | P1 |
| B - Products information | P3 |
| 1 - Product presentation | P4 |
| 2 - Fonctionnalités | P4 |
| 3 - Installation | P5 |
| 4 - Operation mode and naming of files | P7 |
| 5 - Infrared remote control | P10 |
| Annexe A : Specifications | P19 |
| Annexe B : Functions | P19 |

ID-AL products are exclusively manufactured by Waves System

LA VILLE EN BOIS - 44830 BOUAYE - FRANCE

Sales and information: +33 2 40 78 22 44

E-mail : info@id-al.com

Web site: <http://www.id-al.com> and www.wsystem.com

Technical department : support@wsystem.com

Technical support :

For a detailed list of the technical support options, we suggest you to visit our site www.id-al.com.

Information in this manual is subject to change without notice and do not represent any commitment from Waves System. The equipment described in this manual is supplied under condition of the terms of license specifying the legal use conditions. This manual can't be reproduced or used, in whole or in part, in any form and by any mean, for other use than private, without the written permission from Waves System.

ID-AL is a trademarks of Waves System.

WARNING: DO NOT EXPOSE TO MOISTURE AND DUST!

Unplug the power cord before any intervention!

FOR YOUR SAFETY, PLEASE READ CAREFULLY THIS OPERATION MANUAL
BEFORE USING YOUR PLAYER.

A. SAFETY INSTRUCTIONS

A.1 CE marking

The CE marking is on the ID plate, at the back of the product. It means this product complies with the low voltage CE directive, according to the EN 55022 standard, and the EMC directive 61000-4-x.

A.2 Directives

- Electro-magnetic compatibility (EMC) and low voltage directive requirements are satisfied.

A.3 Overview

- The user's manual forms an integral part of the unit. It must be kept close to the unit. Precise observance of these instructions is a pre-condition to use the unit for the intended purpose and for its correct operation.

This user's manual must be passed on to any future purchaser or operator.

The staff would receive instructions concerning the correct use of the product.

- Safety for the operator as well as trouble-free operation of the unit is only ensured if use is made of original equipment parts. Moreover, use may only be made of those accessories that are specified in the technical documentation or that have been expressly approved by the manufacturer. The manufacturer cannot guarantee for the safety or proper functioning of the unit in the case where accessories or consumables are used which are not supplied by the manufacturer.

- The warranty doesn't cover damages caused by use of accessories or consumables which are not supplied by the manufacturer.

- The manufacturer only regard himself as being responsible for the equipment with regard to safety, reliability and proper functioning if assembly, re-settings, changes or modifications, extensions and repairs have been carried out by the manufacturer or a company authorized by the manufacturer and if the equipment is used in conformity with the operating instructions written in this manual.

- The MultiPlayer complies with the applicable technical safety standards at the date of print. All rights reserved for electrical diagrams, procedures, mentioned names and equipments.

- No reproduction, in whole or in part, without the written permission from Waves System.

A.4 General safety instructions

This equipment left our facilities in perfect conditions of operation. In order to maintain these conditions, for safety and to avoid any risk of injury, the user must imperatively follow the safety instructions and read the 'Warning!' notes in this manual.

This equipment, manufactured by Waves System, has been so designed that any danger is virtually excluded provided it is used according to its purpose. However, for safety reasons, we are obliged to point out the following measures:

- When operating this appliance, observe all local rules and enforced regulations!

The homologation shall be invalid if any modification or alteration is made on the appliance. Operating modified appliances may lead to a penal suit. In the interest of the safety of work, the manager and the operator will be responsible for respecting the instructions.

- Retain all packing material in case the device must be shipped. Take care that it does not fall into the hands of children. Only the original packing guarantees optimal safety of the appliance during transport. Should it be necessary to ship the product during the guarantee period, Waves System will not accept claims for damage arising during the transport from using incorrect packing material!

- This product is dedicated to broadcasting music. It may only be operated by trained or knowledgeable personnel who can handle the device correctly.

- Before every use, the operator must check the functional safety and the condition of the appliance.

- The operator must be knowledgeable in the operation of the appliance.

- This device must not be used in places with potential explosion risk. Moreover, it must not be used in an environment favouring combustion neither in a wet or excessively hot or cold place.

A.5 Safety instructions against risks pertaining to electrical current

- The appliance must be connected to a grounded AC power outlet or a correctly wired CEE AC outlet.

- Before connecting the appliance, verify that the power supply voltage and frequency match the specifications indicated on the appliance.

- Before powering, check that the appliance and the cables are not damaged. Damaged cables and connections must be immediately replaced.

- Never leave power cords enter in contact with other cables! Handle the power cord and all the cables connected to a power supply with extreme care.

- Always connect the power supply last. Check that the power switch is 'off' before connecting the appliance to mains supply. The mains outlet must be accessible after installation.

- Check the appliance and its power cord from time to time.
Unplug the power supply if you don't use the appliance anymore or for maintenance.

- Always grasp only the plug on the power supply cord. Never pull the cable to unplug.

- Power supply, repairs and maintenance must be done by qualified personnel.

- Do not switch the appliance on and off in short intervals, as this may reduce its life, especially concerning the hard disk.

A.6 - Conditions of use :

- This product has been designed for indoor use only.
- If the device has been exposed to drastic temperature fluctuation (e.g. after transportation), do not switch it on immediately. The arising condensation water might damage your device. Leave the device switched off until it has reached room temperature.
- Do not shake the device. Avoid brute force when installing or operating the device.
- When choosing the installation-spot, please make sure that the device is not exposed to extreme heat, moisture or dust. There should not be any cables lying around, for your own safety and that of bystanders.

B. PRODUCT INFORMATION

B.1 Correct usage

The player is designed for automatically broadcasting music or audio files.

Correct usage implies observation of the instructions in this manual as well as observing the requirements concerning installation.

B.2 Incorrect usage

Any other use beyond this is considered as incorrect usage. The manufacturer will not be liable for any damage resulting from incorrect usage. The operator carries all risks.

B.3 CONTENT

Player Multiplayer
External power supply
Audio/video cable
Infrared remote control
User manual



B.4 TECHNICAL SPECIFICATIONS

Audio and video player - Model MultiPlayer

Voltage (V) : 5V direct

B.5 INSTALLATION

The apparatus must be set up in a dry and dust-free room.

Do not install the player too close to a wall. To avoid overheating, the ventilation holes must be kept clear and an air circulation gap must be left above the unit.

B.6 ELECTRICAL CONNECTION

Before use, compare mains voltage with that specified on model plate.

1 - Product presentation

The MultiPlayer reads audio and video files stored on a USB stick or external USB hard disk. Playback can be automated to read files in loop.

The MultiPlayer is a versatile player designed for installations where broadcast of sounds, music and video clips are required such as museums, exhibitions, POS displays...

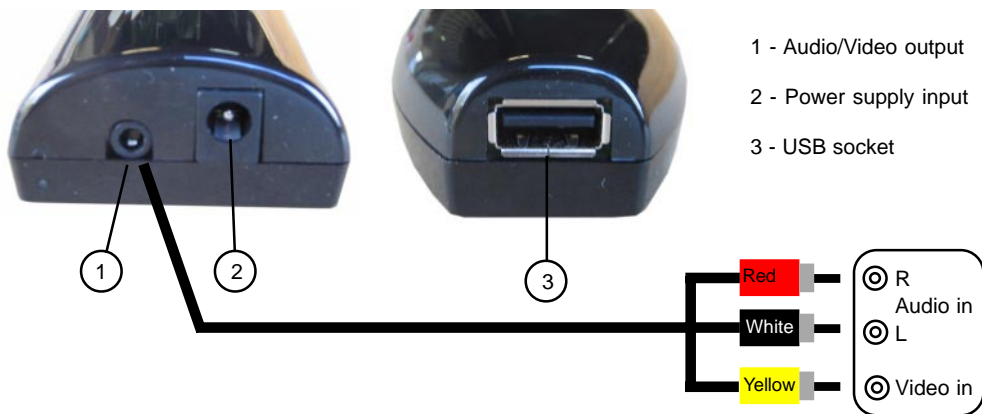
2 - Fonctionnalités

Autoplay: This function is available on the MultiPlayer (for video files only). When the Autoplay is activated, the player will automatically start playing the selected file or directory on powering on.

Updating: by updating the USB memory storage device on a computer.

Audio/video output: Audio and video outputs are grouped onto a 3.5 4 points mini jack. A RCA cable is supplied with the MultiPlayer for connection to a TV or any screen providing a Composite Video input.

3 - INSTALLATION



Memory storage: USB stick or external HDD... **maximum capacity 32Go**

Note: there is no power switch on the MultiPlayer. The player is powered as soon as connected.

4 - Operation mode and naming of files

The first stage is to copy files onto the USB storage device.

Connect the USB stick to a personal computer and copy the files at the root of the stick. Any name can be chosen except special characters.

Depending on the «Autoplay» mode selected, the files read on powering on will be the audio or the video files.

**The files are read in the same order they were copied onto the stick
It is not possible to combine different file formats for a continuous playback**

Supported file formats:

Audio:

- MPEG-2
- MPEG-1 layer 2
- MP3 128kbps to 32kbps - 32kHz / 44.1kHz / 48kHz

Video:

- Xvid (.avi)
- MPEG-1 (.mpg / .mpeg)
- MPEG-2 (.mpg / .mpeg)

Recommended maximum bit rate: 10mbits/s

Format: 4/3 and 16/9

Norme: PAL and NTSC

Use in audio player mode:

Select «music» in the Setup menu (see next chapter)

Audio files are played back in loop one after the other.

The remote control allows change of track, move forward and reverse at various speeds.

Use in video player mode:

Select «movie» in the Setup menu (see next chapter)

Video files are played back in loop one after the other.

The remote control allows change of track, move forward and reverse at various speeds.

5 - Interface and configuration

Pressing the «menu» key on the remote control, gives access to the configuration page.

The four file formats read by the player are displayed as 4 icons at the top of the screen:

Photo: to display still images as a slide show (under development)

Music: to listen to audio files

Photo + music: to display slide shows and listen to music at the same time (under development)

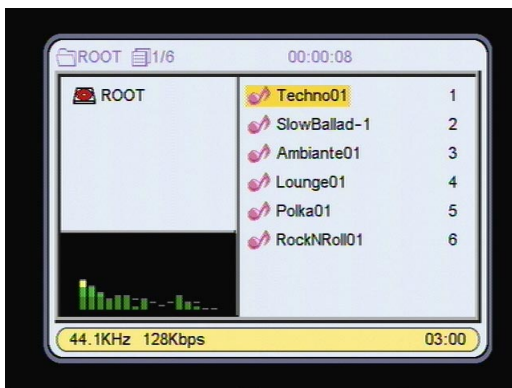
Movie: to watch video files

Select the type of file to be broadcast using the arrow keys on the remote control and confirm the choice with the «play» key.



Example:

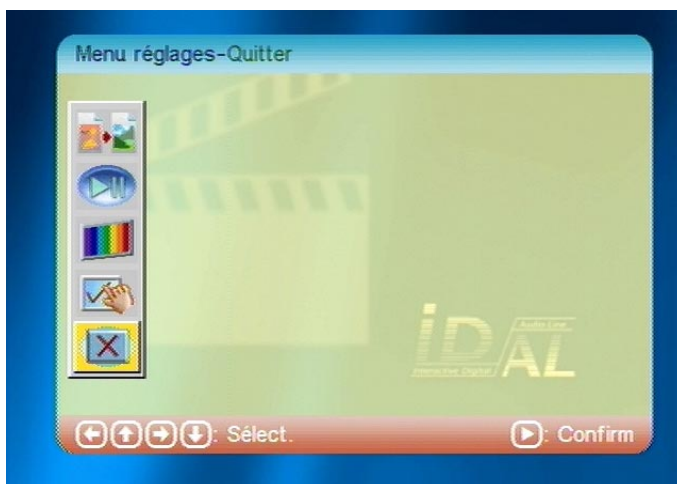
When «Music» is selected, the list of audio files is displayed.



Configuration menu - Setting of parameters:



Select the «Setup» icon with the remote control and press «Play» to confirm the choice.
A setting menu of 5 icons is displayed on the left side of the screen ; each icon opens up a list of options .



To move inside menus, use the «Arrow» keys on the remote control. To confirm a choice, press the «Play» key.

Photo Menu (under development) :

The first setting concerns the display parameters of still images/photos.



Interval time: defines the display time of each photo. Just select the number of seconds.



Transition effect : defines the way photos follow up from each other.



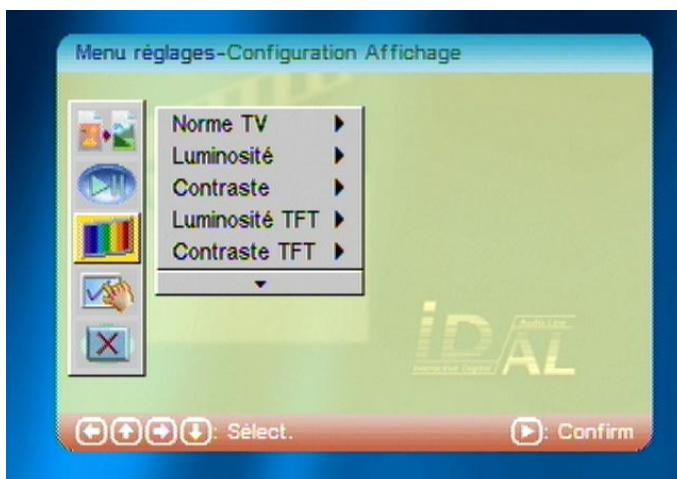
Browse: Thumbnail mode, images are displayed in miniature and it is possible to move and select a specific file. In File Manager mode, images are displayed one after the other.

AutoPlay Menu:



This menu defines which type of file will be played automatically on powering on the player. Select Photo, or Movie, only one option must be «ON». The 2 other modes must be «OFF». (Autoplay for audio file is not operational)

Display configuration menu:



This menu presents options to set the TV norm output, brightness and contrast. Select the parameter to be adjusted and set the desired value.

Custom configuration menu:



Set the parameters for user interface language, encoding mode, interface style, repeat mode and default settings selection.

Language: Choose the language for user interface

Encoding: Define the regional code

Style: Change the colors of user interface

Repeat Mode:

- Off: Read files once and stop
- Single: Keeping repeting the same file
- Folder: Read the folder and loop
- All: Read all files in al directories and loop

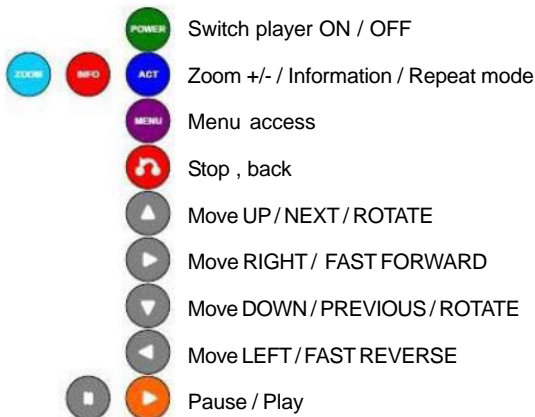
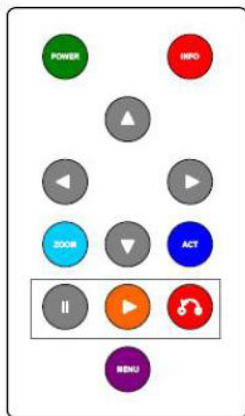
Default:: Go back to default settings

To quit, select the last icon



6 - Infrared remote control handset

The MultiPlayer is controlled by a card format infrared remote ; the infrared sensor is positioned in the front of the player.



The remote control allows :

- Commands: Play / Stop / Next file / Previous file
- Depending on the type of file, zoom, rotation of still images, fast forward and reverse...
- Setting of parameters

If the pressed key is not operational, a «hand» symbol is displayed on the screen.

Appendix A - Characteristics

Power supply :

- Nominal voltage: 5V DC / 2A

Dimensions:

- Length 120mm - Width 50mm - Height 25mm

Weight:

- 80g

Video Output:

- Composite (CVBS)

Audio Output:

- 2 channels (stéréo)

Interfacing:

- Infrared sensor -Play, Stop, Next, Previous, Zoom, Rotate, Forward, Reverse ...
- External power supply connector DC 2.1/5.5
- Output Video/Stereo on mini-jack 3.5 - 4 points
- USB 2.0 High speed - Host connector

Note :



<http://www.id-al.com>

<http://www.wsystem.com>